

Cornell University
Big Red Bands
Alumni Association
Annual Meeting
September 23, 2016



Agenda

Introductions

Weekend Schedule

Travel and Performances

2017-2018 Officers (vote)

FY 17 Budget (vote)

Fischell Band Center Updates

Resource Planning

Sy Katz '31 Parade

2017-2018 Goals

Open Discussion



BRBAA Officers 2015-2016

Chair:	Lowell Frank '99, '03	Washington, DC
Vice-Chair:	Rose Potocky '06	Baltimore, MD
Treasurer:	Brian Adelman '09	Chicago, IL
Resource Chair:	Nick Janiga '00	New Haven, CT
Secretary:	Scott Pesner '86	New York, NY
Events Coordinators:	Adam Drenkard '11	New York, NY
	Lauren Mangano '11	Boston, MA
At-large:	Tommy Seery '87	Philadelphia, PA
At-large:	Marc Goldman '90	New York, NY
At-large:	Tom LaFalce '94	Ithaca, NY
At-large:	Kyle Preston '06, '11	Hartford, CT



Homecoming 2016

10:30 AM	Rehearsal with alumni - "Power"	Alumni Field
11:30 AM	Alumni tailgate and lunch	Fischell Band Center
1:55 PM	CAA Cup presentation Tailgate Concert	Kite Hill
2:40 PM	Pregame show	Schoellkopf Field (duh)
3:00 PM	Kickoff	Schoellkopf Field
6:00 PM ish	Post game concert and reception	Fischell Band Center



Band Schedule, Fall 2016

Marching Band Schedule:

- October 7-8: @ Harvard (Quincy Market)
- October 15: Home vs. Sacred Heart
- October 22: @ Brown
- October 29: Home vs. Princeton
- November 5: Home vs. Dartmouth
- November 12: @ Columbia (Sy Katz '31 Parade)
- November 19: Home vs. Penn (sucks!)

Pep Band Schedule:

- Saturday, November 26th: Red Hot Hockey vs. UNH



Proposed BRBAA Officers 2017-2018

Chair:	Lowell Frank '99, '03	Washington, DC
Vice-Chair:	Brian Adelman '09	Chicago, IL
Treasurer:	Adam Drenkard '11	New York, NY
Resource Chair:	Nick Janiga '00	New Haven, CT
Secretary:	Michelle Yanda '15	Washington, DC
Events Coordinators:	Emily Isenstein '16	New York, NY
	Steve Albanese '14	New York, NY



Cornell University

Finances



Finances

Income derived from:

- Annual gifts to the band

- Long-term investment pool payouts

- Performance fees

- Student fees/dues



Finances

Expenses:

- Marching Band operation

- Pep Band operation

- Facilities maintenance and overhead

- Alumni events and communication

- Equipment reserve

- Playoff reserve



Finances

Equipment Reserves

- Percussion (every 5 years)

- Tubas (3 every 3)

- Uniforms (every 10-12 years)

~~Playoff Reserves~~

- ~~Annual reserve to cover PB spring travel~~

- ~~Possible future change?~~



Cornell University

Budget Review and Approval



**Summary Budget and Cash Flow Statement
for Year Ending June 30, 2017**

Presented September 2016

YEAR ENDING		ACTUALS					BUDGET
		2012	2013	2014	2015	2016	2017
	BUDGET						
	Income	110,909	106,394	119,613	165,344	166,023	147,414
	Expense	109,106	108,532	126,018	123,639	144,591	149,943
	ANNUAL NET PROFIT/(LOSS)	1,803	(2,137)	(6,405)	41,704	21,432	(2,529)
	RESERVE ADJUSTMENT						
	EQUIPMENT						
	Budgeted Equipment	19,950	20,994	20,994	17,234	20,994	20,994
	Real Equipment	11,946	-				
	<i>Equipment Change To Expense</i>	<i>(8,004)</i>	<i>(20,994)</i>	<i>(20,994)</i>	<i>(17,234)</i>	<i>(20,994)</i>	<i>(20,994)</i>
	PLAYOFFS						
	Budgeted Playoffs	9,035	9,035	12,627	14,815	-	-
	Real Playoffs	16,590	18,752	14,815	-		-
	<i>Playoff Change To Expense</i>	<i>7,555</i>	<i>9,717</i>	<i>2,188</i>	<i>(14,815)</i>		-
	SUB-TOTAL, RESERVE ADJUSTMENT	(449)	(11,277)	(18,806)	(32,049)	(20,994)	(20,994)
	Real Expense	108,657	97,255	107,212	91,590	123,597	128,949
	Non reserve NET PROFIT/(LOSS)	2,252	9,140	12,401	73,753	42,426	18,465
	ENDOWMENT ADJUSTMENT						
	Share Value Purchased ¹	-	-	-	(11,265)	(26,642)	
	Share Value Liquidated	-	-	-			
	SUB-TOTAL, ADJUSTMENT FOR ENDOWMENT	-	-	-	(11,265)	(26,642)	
	Account CASH FLOW¹	2,252	9,140	12,401	62,488	15,785	18,465
	¹ Does not include gifts directly to endowment accounts						



Band Resource Planning

- New era in band resources
- New facilities
- New momentum
- New capital inflows
- BRBAA needs to build on the momentum by development of a long term, sustainable resource plan for the band.
 - Where do we want to go?
 - What is the best way to get there?
 - Let's execute

**Endowment FISCAL YEAR COMPARISON**

Big Red Bands Alumni Assn FFE, Marching Band Second Century Fund,
Second Century Big Red Bands, Coleman Endowment,
Johnson Endowment, Seymour Katz Memorial Fund

	2015	2016	YoY
Total Shares	16,151	16,686	3%
Payout	\$40,957	\$43,446	6%
Sharevalue	\$56.02	\$52.59	-6%
Total Value	\$904,807	\$877,562	-3%

New Fishell Family Endowment for bandroom utilities

Total Shares		1910	
Total Value		\$100,452	
Payout		\$5,253	
Total Endowment	\$904,807	\$978,014	8%
Total Acct Balances	\$67,691	\$83,476	23%
Total Accrual Status	(70,311.84)	(96,514.58)	-37%



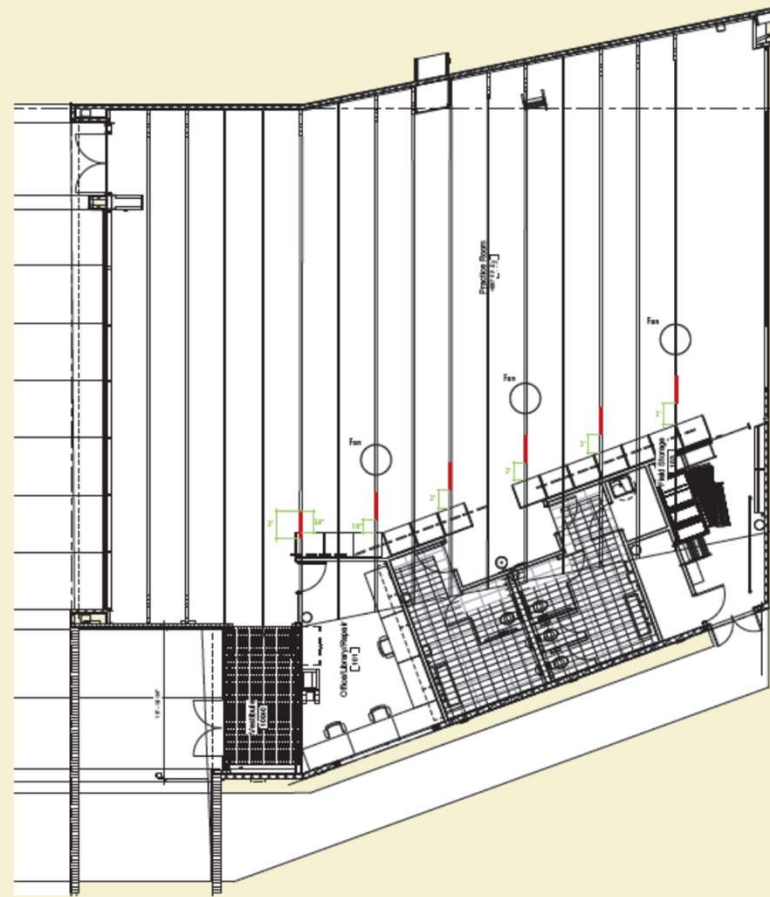
Cornell University

Fischell Band Center





Cornell University



FLOOR PLAN VIEW

BANNER ORDER

North to south through the space:

1. Aardvarking banner
2. Marching banner
3. Color Guard banner
4. Pep Band banner
5. Drumline banner
6. Evening Song banner

SPECIFICATIONS - BANNER PLACEMENT



Cornell University

Resource Planning



Sy Katz '31 Parade

- Saturday, November 12, 2016
 - After Columbia game
 - Tentative time: 6:30 PM
-
- History
 - Logistical challenges
 - New oversight



2017-2018 goals

Comprehensive history of BRBAA officers, budgets, minutes, working documents, newsletters

Increase engagement at Annual Meeting – time? Place?

Work with students and alumni on resource allocation

Modify budget format to better coincide with CU format



Cornell University

brbaa.bigredbands.org



Newsletter schedule

August	<i>Brief content update</i>	Reunion recap Fall travel schedule(MB/PB) Homecoming info
November	<i>Large content update</i>	Recap of season Financial update (past budget) Student stories/articles Alumni beat
January	<i>Brief content update</i>	Phonathon info Travel schedule revisions Pep Band update New band officers
April	<i>Large content update</i>	Notes from BRBAA Chair Notes from HM/DM/PBM Student articles Reunion info Financial update (focus: endowment)